

SOUTH ETNA

MASS ORNAMENT: Caption + Credit Info

Caption + Credit Information

1.



Derrick Adams, *Floater 88*, 2020, Acrylic paint, pencil, fabric on paper collage, on paper, Each: 50 x 50 in (127 x 127 cm), Overall: 50 x 100 in (127 x 254 cm). Courtesy the artist, Salon 94, and South Etna Montauk.

DADA003

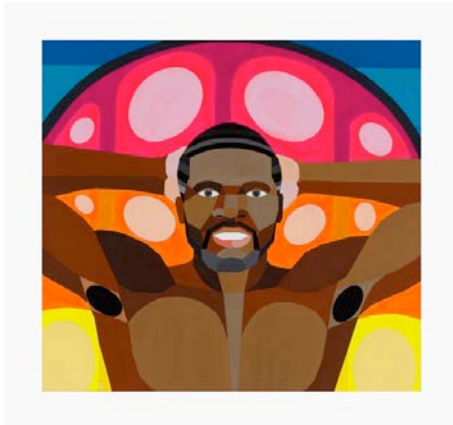
2.



Derrick Adams, *Floater 89*, 2020, Acrylic paint, pencil, fabric on paper collage, on paper, 50 x 72 in, 127 x 182.9 cm. Courtesy the artist, Salon 94, and South Etna Montauk.

DADA004

3.



Derrick Adams, *Floater 90*, 2020, Acrylic paint, pencil, fabric on paper collage, on paper, 23 x 25 in, 58.4 x 63.5 cm. Courtesy the artist, Salon 94, and South Etna Montauk.

DADA005

4.



Thomas Barger, *Passion of the Hole/Basket/Fish*, 2020, Wood, paper, basket, plastic, and paint, 30 x 12 x 18 in, 76.2 x 30.5 x 45.7 cm. Courtesy the artist, Salon 94 Design, and South Etna Montauk.

TBAR001

5.



Louis Fratino, *Red Chalk Portrait*, 2020, Pastel on paper, 11 x 8 1/4 in, 27.9 x 21 cm. Courtesy the artist, Sikkema Jenkins & Co., and South Etna Montauk.

LFRA001

6.



Louis Fratino, *Blue Chalk Tom*, 2020, Pastel and ink on paper, 8 1/4 x 11 in, 21 x 27.9 cm. Courtesy the artist, Sikkema Jenkins & Co., and South Etna Montauk.

LFRA002

7.



Terri Friedman, *Pause*, 2020, Cotton, chenille, wool, acrylic fibers, 48 x 24 in, 121.9 x 61 cm. Courtesy the artist and South Etna Montauk.

TFRI001

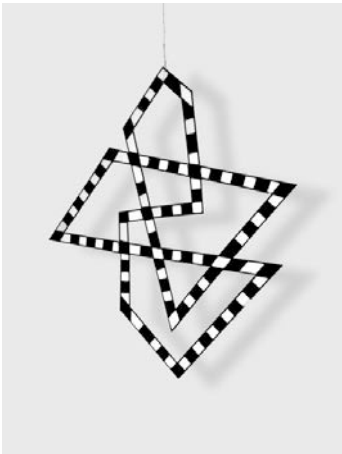
8.



Terri Friedman, *Laughter is Carbonated Holiness*, 2020, Cotton, chenille, wool, acrylic fibers, 41 x 54 in, 104.1 x 137.2 cm. Courtesy the artist and South Etna Montauk.

TFRI002

9.



Frank Haines, *Balloons Inflated by Some Now Dead*, 2020, Stained glass, lead, tin, zinc, 36 x 36 x 1/4 in, 91.4 x 91.4 x .6 cm. Courtesy the artist and South Etna Montauk.

FHAI001

10.



Varnette Honeywood, *Let's Party*, 1980, Collage on board, 30 x 40 in, 76.2 x 101.6 cm. Courtesy Eric Firestone Gallery, and South Etna Montauk.

VHON001

11.



Ak Jansen, *Silver*, 2020, Clay, fiber, glaze, underglaze, mother of pearl, 3 1/2 x 3 x 3 3/4 in, 8.9 x 7.6 x 9.5 cm. Courtesy the artist and South Etna Montauk.

AJAN001

12.



Ak Jansen, *Teddy*, 2020, Clay, fiber, glaze, underglaze, mother of pearl, 5 1/2 x 3 x 4 1/2 in, 14 x 7.6 x 11.4 cm. Courtesy the artist and South Etna Montauk.

AJAN002

13.



Ak Jansen, *Silver*, 2020, Clay, fiber, glaze, underglaze, mother of pearl, 3 3/4 x 2 3/4 x 3 in, 9.5 x 7 x 7.6 cm. Courtesy the artist and South Etna Montauk.

AJAN003

14.



Nikki Maloof, *Squid, Urchin, and Colander*, 2020, Graphite on paper, 11 x 8 in, 27.9 x 20.3 cm. Courtesy the artist, Jack Hanley Gallery, New York, and South Etna Montauk.

NMAL002

15.



Ohad Meromi, *Sunset Lamp*, 2019, Baltic birch, concrete, resin, wooden beads, 55 x 24 x 24 in, 139.7 x 61 x 61 cm. Courtesy the artist and South Etna Montauk.

OMER001

16.



Ohad Meromi, *Moonflower Lamp*, 2019, Baltic birch, concrete, resin, cotton, 20 x 18 x 8 in, 50 x 45 x 20 cm. Courtesy the artist and South Etna Montauk.

OMER002

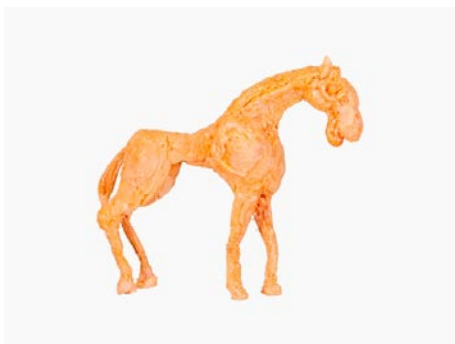
17.



Ohad Meromi, *Sleeping Worker*, 2015-2019, Bronze, 30 x 18 x 18 in, 76.2 x 45.7 x 45.7 cm. Courtesy the artist and South Etna Montauk.

OMER003

18.



Ohad Meromi, *Orange Horse*, 2019, Polyurethane foam, 17 x 20 x 5 in, 43.2 x 50.8 x 12.7 cm. Courtesy the artist and South Etna Montauk.

OMER004

19.



Ohad Meromi, *Window Arrangement*, 2017, Acrylic, carving on wood, 34 x 34 in, 86.4 x 86.4 cm. Courtesy the artist and South Etna Montauk.

OMER005

20.



Ohad Meromi, *Machine Head*, 2013-2020, Cast aluminum, 29 x 22 x 7 in, 73.7 x 55.9 x 17.8 cm. Courtesy the artist and South Etna Montauk.

OMER006

21.



Ohad Meromi, *Light Breakers*, 2020, Mixed media, 24 x 24 x 1 in, 61 x 61 x 2.5 cm. Courtesy the artist and South Etna Montauk.

OMER007

22.



Ruby Neri, *Untitled (Dead Already)*, 2020, Ceramic with glaze, 22 x 23 x 21 in, 55.9 x 58.4 x 53.3 cm. Courtesy the artist, Salon 94, New York, and South Etna Montauk.

RNER001

23.



Gaetano Pesce, *Pratt Chair #7 1984/2018 (Blue)*, 2019, Polyurethane resin, Smooth-On pigment, 37 x 19 x 20 in, 94 x 48.3 x 50.8 cm. Courtesy the artist, Salon 94 Design, New York, and South Etna, Montauk.

GPES001

24.



Gaetano Pesce, *Pratt Chair #7 1984/2018 (Red)*, 2019, Polyurethane resin, Smooth-On pigment, 37 x 19 x 20 in, 94 x 48.3 x 50.8 cm. Courtesy the artist, Salon 94 Design, New York, and South Etna, Montauk.

GPES002

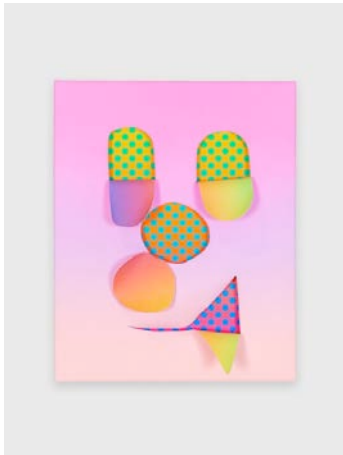
25.



Rob Pruitt, *Dumbstruck and Woebegone*, 2020,
Acrylic on linen, 62 x 48 in, 157.5 x 121.9 cm.
Courtesy the artist and South Etna Montauk.

RPRU002

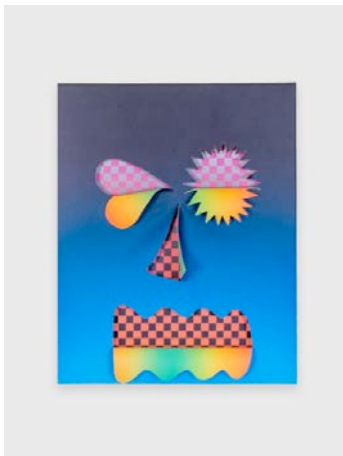
26.



Rob Pruitt, *Friendly, Eager, and Excited*, 2020,
Acrylic on canvas, 20 x 16 in, 50.8 x 40.6 cm.
Courtesy the artist and South Etna Montauk.

RPRU003

27.



Rob Pruitt, *Peeved, Provoked, and Riled*, 2020,
Acrylic on canvas, 20 x 16 in, 50.8 x 40.6 cm.
Courtesy the artist and South Etna Montauk.

RPRU004

28.



Rob Pruitt, *Envious, Admiring, Infatuated, and In Love*, 2020, Acrylic on canvas, 20 x 16 in, 50.8 x 40.6 cm. Courtesy the artist and South Etna Montauk.

RPRU005

29.



Rob Pruitt, *Curious, Confused, Bewildered, Bemused*, 2020, Acrylic on canvas, 20 x 16 in, 50.8 x 40.6 cm. Courtesy the artist and South Etna Montauk.

RPRU006

30.



Walter Robinson, *Giantess*, 2010, Acrylic on canvas, 56 x 30 in, 142.2 x 76.2 cm. Courtesy the artist and South Etna Montauk.

WROB001

31.



Walter Robinson, *Lands' End Shape and Enhance Odalisque*, 2019, Acrylic on canvas, 18 x 24 in, 45.7 x 61 cm. Courtesy the artist and South Etna Montauk.

WROB002

32.



Walter Robinson, *Target All Womens Swim*, 2016, Acrylic on canvas, 48 x 48 in, 121.9 x 121.9 cm. Courtesy the artist and South Etna Montauk.

WROB003

33.



Walter Robinson, *Macys All Womens Suits on Sale*, 2013, Acrylic on canvas, 48 x 48 in, 121.9 x 121.9 cm. Courtesy the artist and South Etna Montauk.

WROB004

34.



Walter Robinson, *Watermelon*, 2010, Acrylic on paper, 11 x 14 in, 27.9 x 35.6 cm. Courtesy the artist and South Etna Montauk.

WROB005

35.



Brian Rochefort, *Paint Can #1*, 2020, Ceramic, glaze, glass, fragments, 10 x 10 x 11 in, 25.4 x 25.4 x 27.9 cm. Courtesy the artist and South Etna Montauk.

BROC001

36.



Brian Rochefort, *Paint Can #2*, 2020, Ceramic, glaze, glass fragments, 12 x 11 x 11 in, 30.5 x 27.9 x 27.9 cm. Courtesy the artist and South Etna Montauk.

BROC002

37.



Brian Rochefort, *Paint Can #3*, 2020, Ceramic, glaze, glass fragments, 9 x 9 1/2 x 9 1/2 in, 22.8 x 24.1 x 24.1 cm. Courtesy the artist and South Etna Montauk.

BROC003

38.



Brian Rochefort, *Paint Can #4*, 2020, Ceramic, glaze, glass fragments, 12 x 11 x 10 in, 30.5 x 27.9 x 25.4 cm. Courtesy the artist and South Etna Montauk.

BROC004

39.



Brian Rochefort, *Paint Can #5*, 2019, Ceramic, glaze, 9 1/2 x 10 x 10 in, 24.1 x 25.4 x 25.4 cm. Courtesy the artist and South Etna Montauk.

BROC005

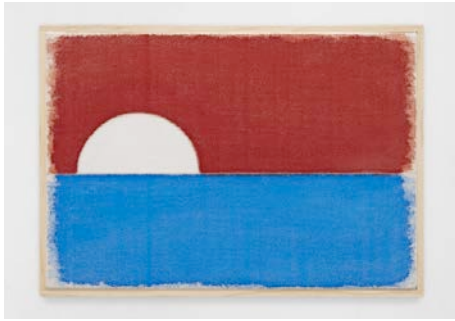
40.



Jennifer Rochlin, *From Laurel Canyon to Hollywood Boulevard*, 2020, Ceramic, glaze, 20 x 16 x 15 in, 50.8 x 40.6 x 38.1 cm. Courtesy the artist, The Pit, Los Angeles, and South Etna Montauk.

JROC001

41.



Ugo Rondinone,
vierteroktoberzweitausendundneunzehn, 2019,
Watercolor on canvas, artist's frame, 9 x 13 in, 23 x
33 cm. Courtesy the artist and South Etna Montauk.

URON001

42.



Ugo Rondinone,
sechzehnterjanuarzweitausendundzwanzig, 2020,
Watercolor on canvas, artist's frame, 8 x 12 in, 20.3 x
30.5 cm. Courtesy the artist and South Etna
Montauk.

URON002

43.



Bruce M. Sherman, *Grounded and Searching for the
Higher to Join*, 2020, Glazed ceramic, metal fittings,
wood, 67 x 30 x 37 in, 170.2 x 76.2 x 94 cm.
Courtesy the artist, Nicelle Beauchene Gallery, New
York, and South Etna Montauk.

BMSH001

44.



Bruce M. Sherman, *Octave: the Red Bird*, 2020,
Glazed ceramic, 9 x 8 x 2 in, 22.9 x 20.3 x 5.1 cm.
Courtesy the artist, Nicelle Beauchene Gallery, New
York, and South Etna Montauk.

BMSH002

45.



Bruce M. Sherman, *Gratitude for the Mornin' Coffee*, 2020, Glazed ceramic, 6 1/2 x 7 x 1 1/4 in, 16.5 x 17.8 x 3.2 cm. Courtesy the artist, Nicelle Beauchene Gallery, New York, and South Etna Montauk.

BMSH003

46.



Bruce M. Sherman, *The Tree of Life*, 2020, Glazed ceramic, 10 x 10 x 2 1/2 in, 25.4 x 25.4 x 6.3 cm. Courtesy the artist, Nicelle Beauchene Gallery, New York, and South Etna Montauk.

BMSH004

47.



Bruce M. Sherman, *Crying with Aspiration*, 2020, Glazed ceramic, 8 1/2 x 8 1/2 x 3/4 in, 21.6 x 21.6 x 1.9 cm. Courtesy the artist, Nicelle Beauchene Gallery, New York, and South Etna Montauk.

BMSH005

48.



Bruce M. Sherman, *Mount Analogue*, 2020, Stoneware, glaze, copper wire, 7 1/2 x 6 1/2 x 1 in, 19.1 x 16.5 x 2.5 cm. Courtesy the artist, Nicelle Beauchene Gallery, New York, and South Etna Montauk.

BMSH006

49.



Bruce M. Sherman, *Trees See Me*, 2020, Stoneware, glaze, copper wire, 5 1/2 x 7 1/2 x 1 3/4 in, 14 x 19.1 x 4.4 cm. Courtesy the artist, Nicelle Beauchene Gallery, New York, and South Etna Montauk.

BMSH007

50.



Bruce M. Sherman, *Four Eyes*, 2020, Stoneware, glaze, copper wire, 6 x 12 x 1 in, 15.2 x 30.5 x 2.5 cm. Courtesy the artist, Nicelle Beauchene Gallery, New York, and South Etna Montauk.

BMSH008

51.



Bruce M. Sherman, *Pink Tears*, 2018, Glazed ceramic, 6 x 13 3/4 x 13 3/4 in, 15.2 x 34.9 x 34.9 cm. Courtesy the artist, Nicelle Beauchene Gallery, New York, and South Etna Montauk.

BMSH010

52.



Bruce M. Sherman, *Eyes Have It*, 2018, Glazed ceramic, 10 x 13 x 13 in, 25.4 x 33 x 33 cm. Courtesy the artist, Nicelle Beauchene Gallery, New York, and South Etna Montauk.

BMSH011

53.



Bruce M. Sherman, *Little Feet are the Most Lovable*, 2020, Glazed ceramic, 4 x 1 x 2 in, 10.2 x 2.5 x 5.1 cm. Courtesy the artist, Nicelle Beauchene Gallery, New York, and South Etna Montauk.

BMSH012

54.



Bruce M. Sherman, *Awake Rabbi*, 2020, Glazed ceramic, 6 x 5 1/2 x 2 1/2 in, 15.2 x 14 x 6.3 cm. Courtesy the artist, Nicelle Beauchene Gallery, New York, and South Etna Montauk.

BMSH014

55.



Bruce M. Sherman, *Searching*, 2018, Stoneware, wood, glue, 9 1/4 x 26 1/4 x 15 in, 23.5 x 66.7 x 38.1 cm. Courtesy the artist, Nicelle Beauchene Gallery, New York, and South Etna Montauk.

BMSH015

56.



Bruce M. Sherman, *Tree Stillness Mystery*, 2018, Glazed ceramic, 32 x 13 x 15 in, 81.3 x 33 x 38.1 cm. Courtesy the artist, Nicelle Beauchene Gallery, New York, and South Etna Montauk.

BMSH016

57.



Bruce M. Sherman, *Title to come*, 2018, Glazed ceramic, Dimensions to come. Courtesy the artist, Nicelle Beauchene Gallery, New York, and South Etna Montauk.

BMSH017

58.



Katie Stout, *Unique Shelf in Paper Pulp*, 2020, Paper pulp, 75 x 51 x 20 in, 190.5 x 129.5 x 50.8 cm. Courtesy the artist, R & Company, New York, and South Etna Montauk.

KSTOU001

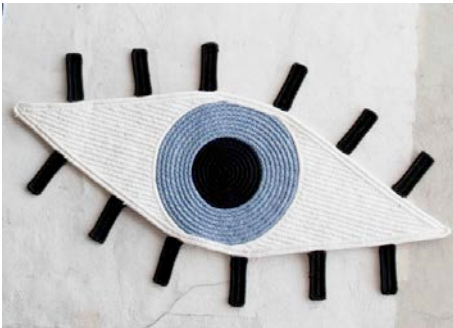
59.



Katie Stout, *Unique Pendant Lamp*, 2020, Cast bronze and glass, 17 x 21 x 21 in, 43.2 x 53.3 x 53.3 cm. Courtesy the artist, R & Company, New York, and South Etna Montauk.

KSTOU002

60.



Katie Stout, *Untitled Rug*, n.d., Materials to come, Dimensions to come. Courtesy the artist, and South Etna Montauk.

KSTOU003

61.



Katie Stout, *Untitled Stool*, n.d., Ceramic, Dimensions to come. Courtesy the artist, and South Etna Montauk.

KSTOU004

62.



Katie Stout, *Untitled Lamp*, 2020, Materials to come, Dimensions to come. Courtesy the artist, Nina Johnson, Miami, and South Etna Montauk.

KSTOU005

63.



Katie Stout, *Untitled Lamp*, 2020, Materials to come, Dimensions to come. Courtesy the artist, Nina Johnson, Miami, and South Etna Montauk.

KSTOU007

64.



Katie Stout, *Untitled Table*, 2020, Hard fired clay, Dimensions to come. Courtesy the artist, Nina Johnson, Miami, and South Etna Montauk.

KSTOU008

65.



Iiu Susiraja, *Sausage cupid*, 2019, Chromogenic print, 24 x 24 in, 61 x 61 cm. Courtesy the artist, Ramiken, New York, and South Etna Montauk.

ISUS001